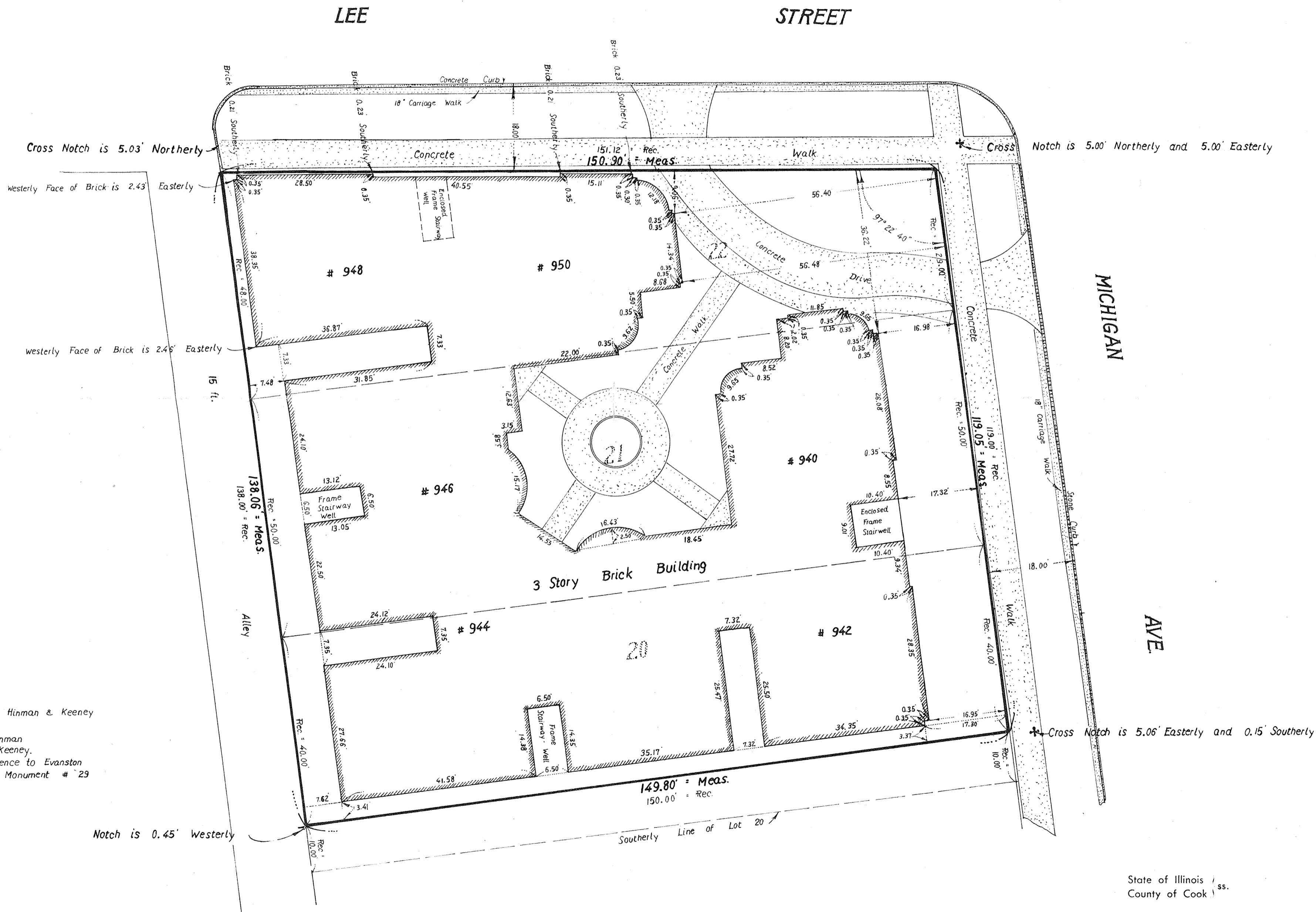


GREMLEY & BIEDERMANN Land Surveyors

Plat of Survey

Lots 21 and 22 and the Northerly 40 feet in width from front to rear of Lot 20 in Sub Block 2 in Resubdivision of Blocks 4 and 5 in Gibbs Ladd and George Addition to Evanston, being a Subdivision of part of the South Half of the Northeast Quarter of Section 19, Township 41 North, Range 14, East of the Third Principal Meridian, in Cook County, Illinois.



Note:

Benchmark at Southeast Corner Hinman & Keeney
Steel Rod in Concrete
1 ft. West of East Line of Hinman
8 ft. South of North Line of Keeney.
Elevations shown are in reference to Evanston
Datum. Elevation is 17.95; Monument # 29
(Add 579.70 for U.S.G.S.)

Distances are marked in feet and decimal parts thereof.

Order No. 733007

Scale: 1 inch = 15 feet

Date: September 14, 1973

Ordered by: Illinois Realty & Management Co.

EXHIBIT A

State of Illinois /
County of Cook / ss.

We, GREMLEY & BIEDERMANN do hereby certify that we have surveyed the above described property and that the plat hereon drawn is a correct representation of said survey corrected to a temperature of 62° Fahrenheit.

[Signature]
REG. ILL. Land Surveyor