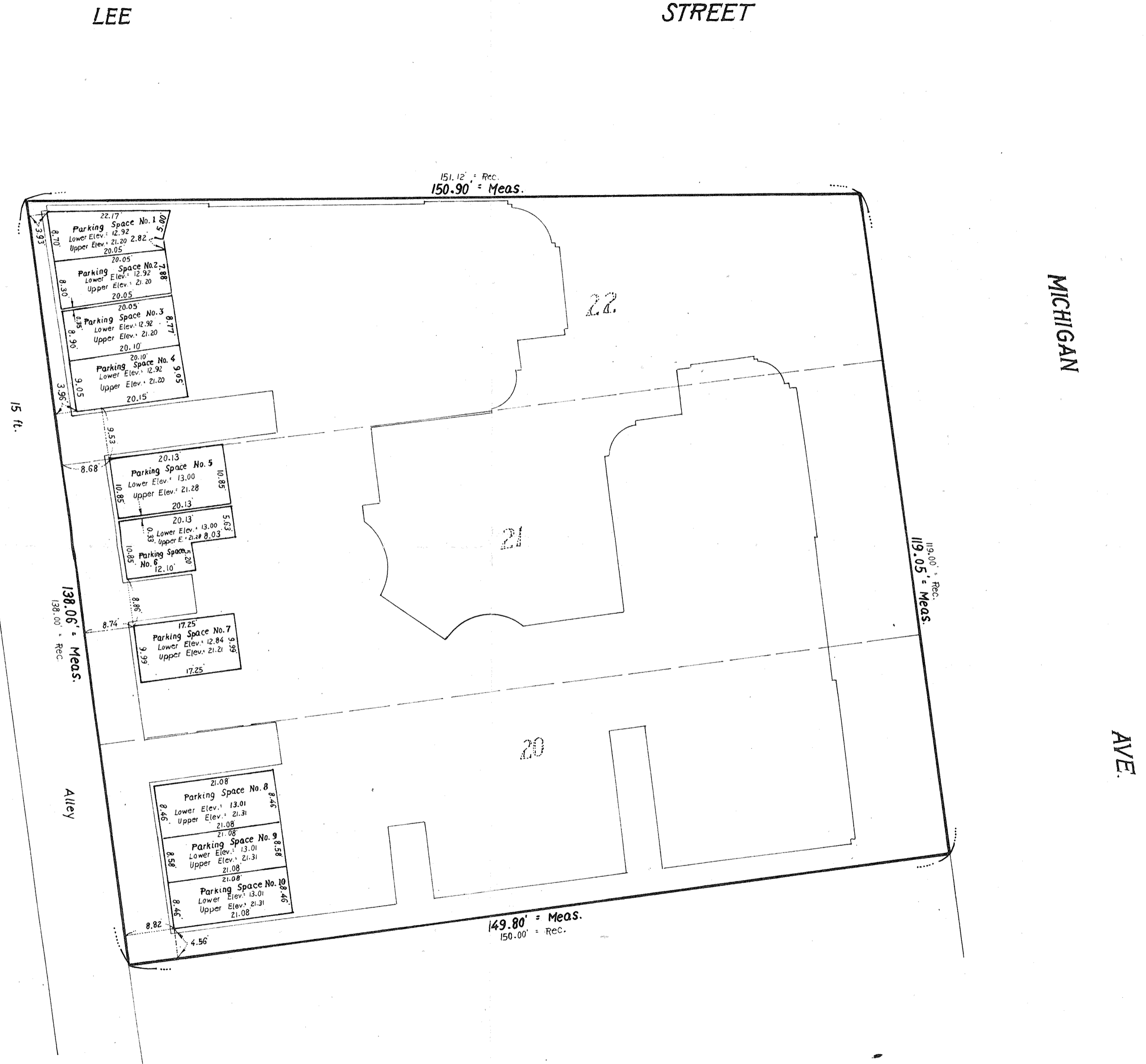


# GREMLEY & BIEDERMANN Land Surveyors

## Plat of Survey



**Note:**  
 Horizontal Planes shown hereon are to Top of Concrete Floor and bottom of finished ceiling.  
 Vertical Planes shown hereon are from interior Face of exterior walls to masonry walls.  
 All Elevations hereon shown are referenced to Elevation datum as described on Page 1 of this Survey.

Order No. 733007  
 Scale: 1 inch = 15 feet  
 Date: September 14, 1973  
 Ordered by: Illinois Realty & Management Co.

Ground Floor  
 EXHIBIT A

State of Illinois )  
 County of Cook ) ss.

We, GREMLEY & BIEDERMANN do hereby certify that we have surveyed the above described property and that the plat hereon drawn is a correct representation of said survey corrected to a temperature of 62° Fahrenheit.

*[Signature]*  
 REG. ILL. Land Surveyor