

GREMLEY & BIEDERMANN Land Surveyors

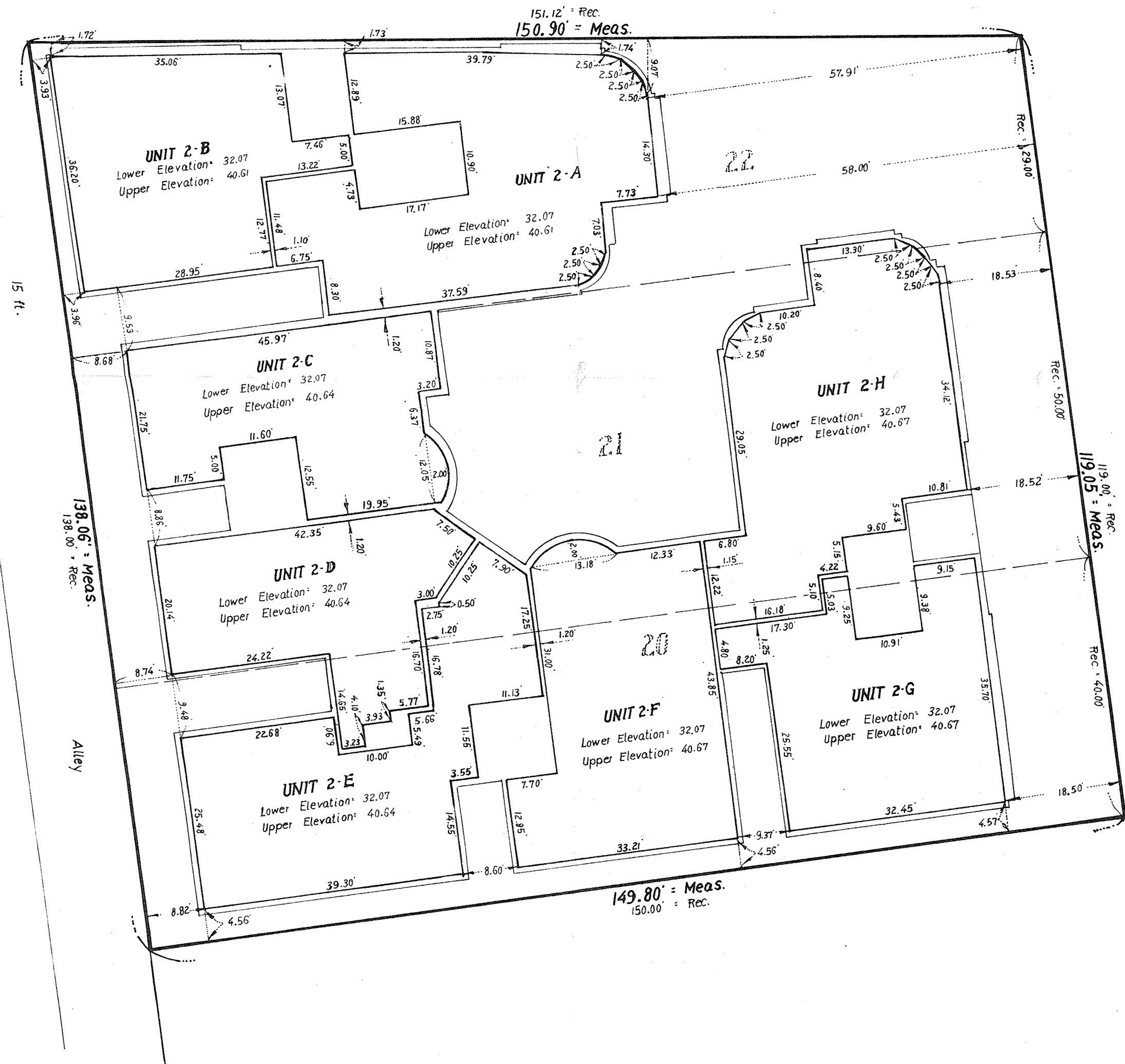
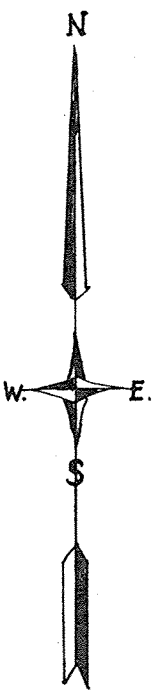
Plat of Survey

LEE

STREET

MICHIGAN

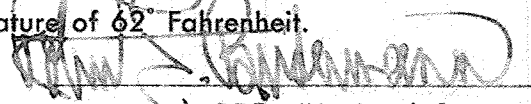
AVE.



Note:
 Horizontal Planes shown hereon are to Top of finished Floor and bottom of finished ceiling.
 Vertical Planes shown hereon are measured to finished interior Face of exterior walls and finished Face of interior walls.
 All Elevations shown hereon are referenced to Elevation datum as described on Page 1 of this Survey.

Distances are marked in feet and decimal parts thereof.
 Order No. 733007
 Scale: 1 inch = 15 feet
 Date: September 14, 1973
 Ordered by: Illinois Realty & Management Co.

2nd Floor
 EXHIBIT "A"

State of Illinois } ss.
 County of Cook }
 We, GREMLEY & BIEDERMANN do hereby certify that we have surveyed the above described property and that the plat hereon drawn is a correct representation of said survey corrected to a temperature of 62° Fahrenheit.

 REG. ILL. Land Surveyor