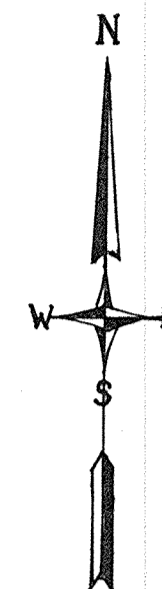
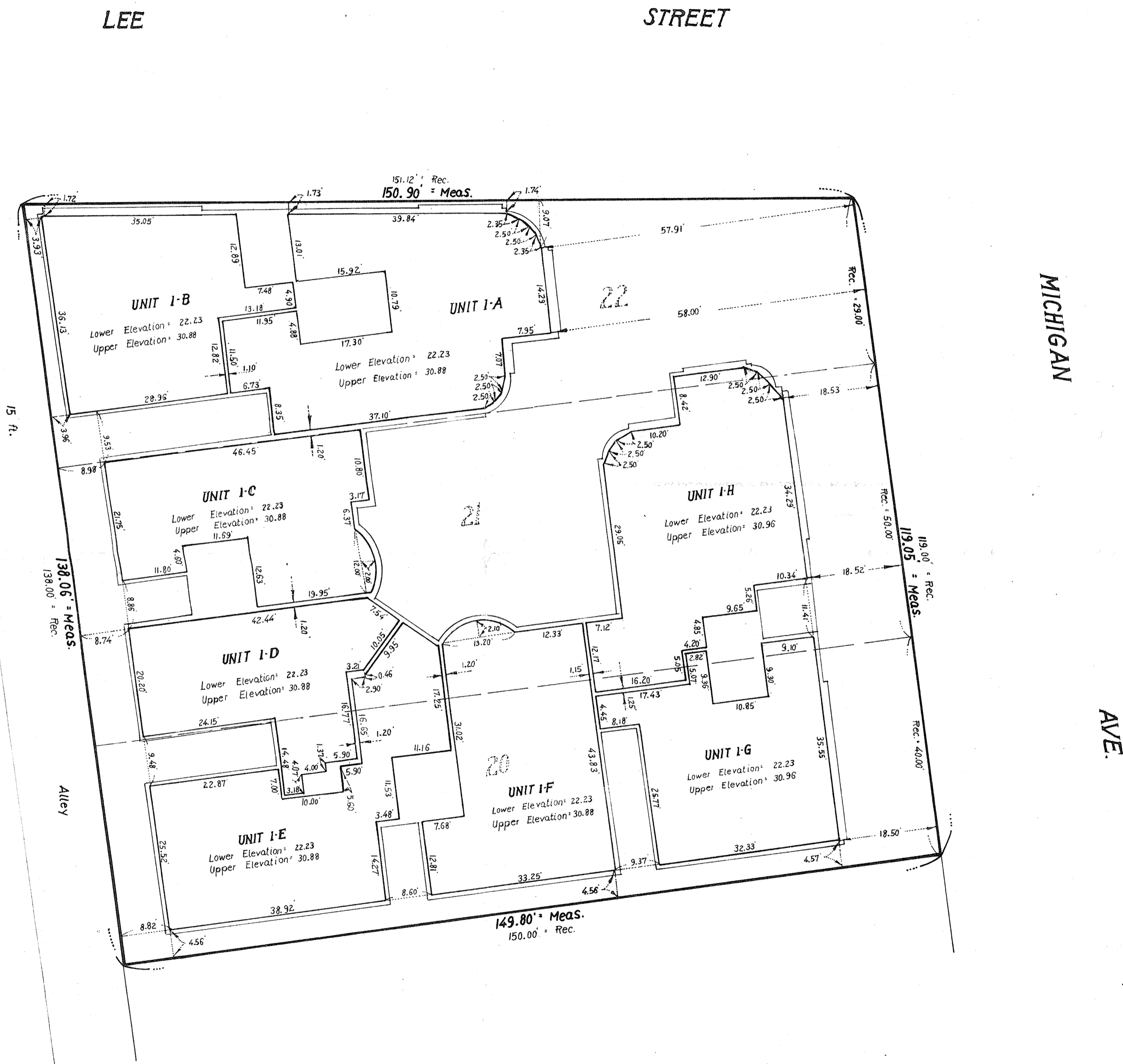


# GREMLEY & BIEDERMANN Land Surveyors

## Plat of Survey



**Note:**

Horizontal Planes shown hereon are to Top of finished Floor and bottom of finished Ceiling.  
 Vertical Planes shown hereon are measured to finished interior Face of exterior walls and finished Face of interior walls.  
 All Elevations hereon shown are referenced to Elevation datum as described on Page 1 of this survey.

Distances are marked in feet and decimal parts thereof.

Order No. 733007  
 Scale: 1 inch = 15 feet  
 Date: September 14, 1973  
 Ordered by: Illinois Realty & Management Co.

1st Floor  
 EXHIBIT "A"

State of Illinois ss.  
 County of Cook

We, GREMLEY & BIEDERMANN do hereby certify that we have surveyed the above described property and that the plat hereon drawn is a correct representation of said survey corrected to a temperature of 62° Fahrenheit.

REG. ILL. Land Surveyor